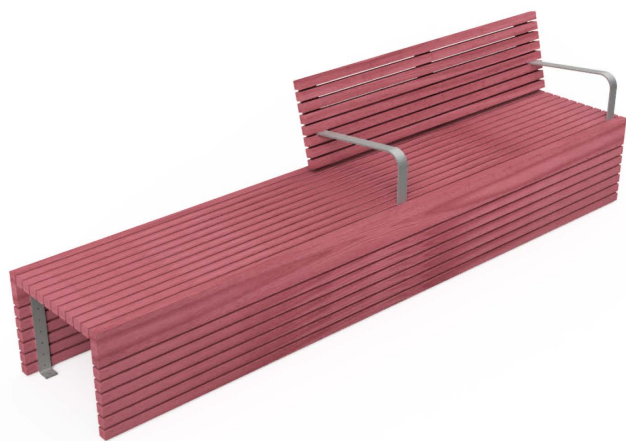


Carters Timber Half Seat

The Carters Timber Half Seat combines modern design with functionality, featuring horizontal timber slats and a half-backrest with armrests for comfort. Its durable galvanised steel frames paired with natural hardwood finish makes it a versatile and stylish outdoor seating solution.



Customisation
available

Quality & durability

- Galvanised steel frame
- Hardwood timber slats; Natural finish
- Galvanised fittings
- Surface mounted

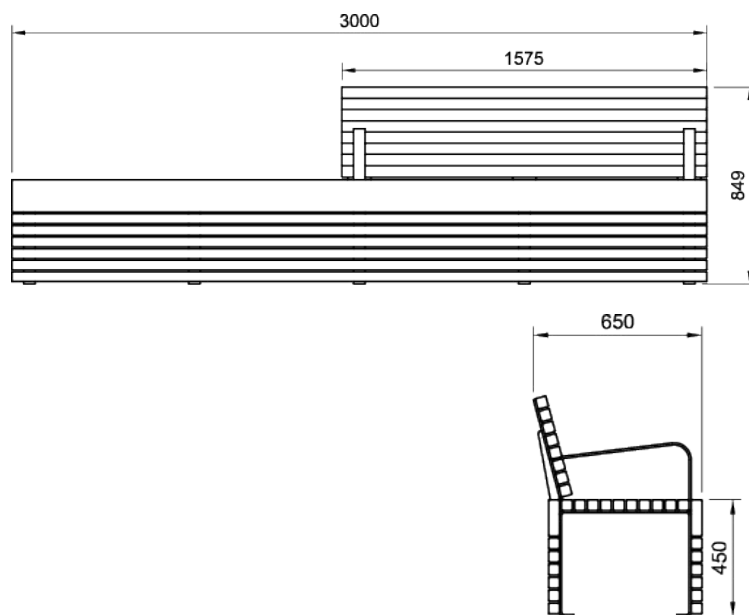
Options

- Custom lengths to suit
- Various timber options- Purple Heart, Vitex and Saligna
- Powder coated frame
- Stainless steel frame
- Plant mounted

Ideal for

- Public parks
- Streetscapes
- Bus stops
- Schools and universities
- Commercial outdoor spaces
- Gardens
- Community spaces
- Walkways and trails

Specifications



**A wide range of colours are available to suit your desired colour scheme
All options above need to be discussed prior to purchase.

Contact us today

Freephone **0508 4 URBAN** or visit urbaneffects.co.nz