

Folly Bench

Discover Folly Bench designed by Ron Arad for Magis, now masterfully reimaged by Metalco in high-performance concrete (HPC) version.

This modern marvel of urban seating blends art and functionality, featuring a ribbon shape with varying backrest heights and seating for up to ten. Its Velluto-finished outer surface boasts raised waves, while the inner surface offers smooth or polished concrete options. Supported by hidden adjustable feet or fixed with threaded rods, the Folly bench ensures perfect positioning.

Combining sleek aesthetics with strong durability, it is inspired by the harmony and fluidity of nature.



Customisation available



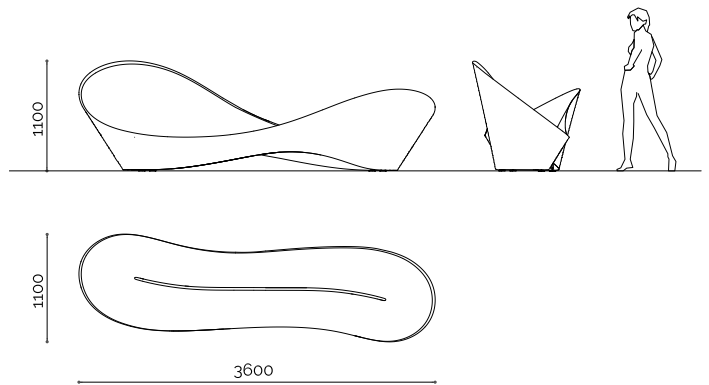
Quality & durability

- **Designer:** Ron Arad
- **Dimensions & weight:** 3600 × 1100 mm H 1100 mm | 1350 kg
- **Materials:** HPC (High Performance Concrete) available in different finishes and colours.
- **Fixings:** Freestanding with pedestals or Installation with threaded bars

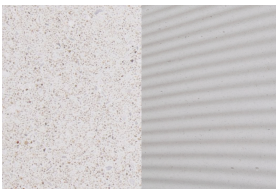
Ideal for

- Architectural urban spaces
- High-profile metropolitan settings
- Gallery and museum forecourt
- Public parks and gardens
- Shopping malls and retail centres
- Education institutions

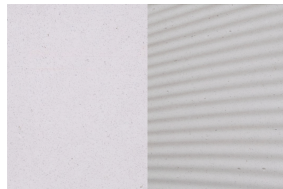
Specifications



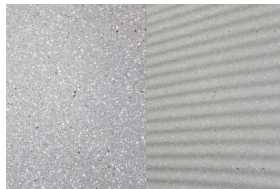
Finishes available



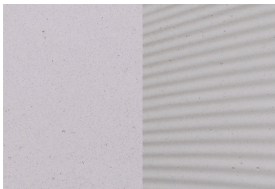
HPC White Honed-Smooth Formwork



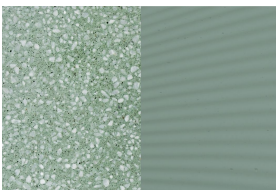
HPC Smooth White



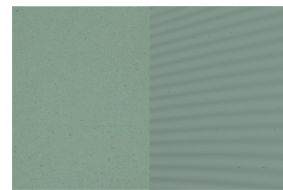
HPC Grey Honed-Smooth Formwork



HPC Smooth Grey



HPC Green Honed-Smooth Formwork



HPC Smooth Green



HPC Polished Murano Terrace

Contact us today

Freephone **0508 4 URBAN** or visit urbaneffects.co.nz